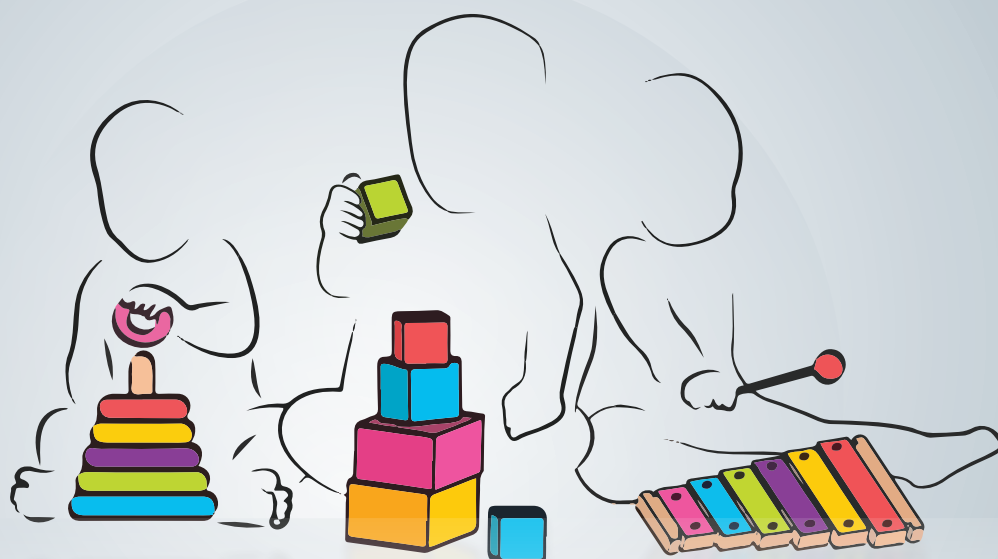


Evidence Based Research for the establishment of Child Development Centers



NAILA ZAMAN KHAN



CONTENTS OF PUBLICATION

1989

1 **Design of Two – Phase Prevalence Surveys of Rare Disorder;** Petrick E. Shrout; Stephen C Newman, *Biometrics*, Vol.45, No 2 (June;1989), 549-555

1990

2 **Validity of the “Ten Questions” for screening serious childhood disability: results from urban Bangladesh.** Zaman SZ, Khan NZ, Islam S, Banu S, Dixit S, Shrout P, Durkin M. *Int J Epidemiology*. 19: 613-620, 1990.

1993

3 **The effects of a natural disaster on child behaviour: evidence for post-traumatic stress.** Durkin M, Khan N, Davidson LL, Zaman SS, Stein ZA. *American J Public Health*. 83: 1549-1553, 1993.

4 **The Effects of a Natural Disaster on Child Behavior: Evidence for Posttraumatic Stress;** Maureen S. Durkin, PhD, DrPH, Naila Khan, MD, PhD, Leslie L. Davidson, MD, MSc, Sultana S. Zaman, PhD, and Zena A. Stein, M4, MB, BCh. *American Journal of Public Health*. December 1993, DOI: 10.2105/AJPH.83.11.1549.

1994

5 **Validity of the ten questions screen for childhood disability: results from population-based studies in Bangladesh,** Durkin MS, Davidson LL, Desai P, Hasan ZM, Khan N, Thorburn MJ, Shrout PE, Wang W. Jamaica and Pakistan. *Epidemiology*. 5: 283-289, 1994.

1998

6 **Mortality of Urban and Rural Young Children with Cerebral Palsy in Bangladesh;** Khan NZ, Ferdous S, Munir S, Huq S, McConachie H. *Developmental Medicine and Child Neurology*, 40: 749 - 753, 1998.

7 **Khan NZ. Best Resource use for Disabled Children.** *World Health Forum*. Vol. 19 (3), 47 - 52, 1998.

1999

8 **Lead poisoning and psychomotor delay in Bangladeshi children;** Khan NZ, Khan AH. *Lancet*.(letter) Feb 27; 353 (9154): 754, 1999

9 **Development Of an Independent Behavior Assessment Scale For Bangladesh;** Shirin Z. Munir, Z Sultana, Helen Mcconachie ; (Paper accepted August 1999). *journal of Applied Research in Intellectual Disabilities*. VOL.12, NO 3 pp.241-252,1999

2000

10 **Predictors of stress in mothers of young children with cerebral palsy in Bangladesh;** Mobarak R, Khan NZ, Munir S, Zaman SZ, McConachie H. *J Ped Psychology*. Sep; 25 (6): 427 - 433, 2000.

CONTENTS OF PUBLICATION

11

Prenatal and postnatal risk factors for mental retardation among children in Bangladesh; Durkin MS, Khan NZ, Davidson LL, Huq S, Munir S, Rasul E, Zaman SS. *Am J Epidemiology* 1;152(11):1024-33, December 2000.

12

A randomised controlled trial of alternative modes of service provision to young children with cerebral palsy in Bangladesh; McConachie H, Huq S, Munir S, Ferdous S, Zaman S, Khan NZ. *J of Pediatrics* 137(6):769-776, December 2000

2001

13

Difficulties for mothers in using an early intervention service for children with cerebral palsy in Bangladesh; McConachie H, Huq S, Munir S, Kamrunnahar, Akhter N, Ferdous S, Khan NZ; *Child Care Health Dev*, Jan;27(1):1-12, 2001.

2003

14

Studies of children in developing countries. How soon can we prevent neurodisability in childhood? Davidson LL, Durkin M, Khan NZ. *Developmental Medicine & Child Neurology*. 2003 Aug;95:18-24.

15

Profile of Childhood Epilepsy in Bangladesh; Banu SH, Khan NZ, Hossain M, Jahan A, Parveen M, Rahman N, Boyd S, Neville BGR. *Developmental Medicine & Child Neurology* 2003, 45: 477-482 477

2004

16

The use of the Bayley Infant Neurodevelopmental Screener (BINS) in identifying neurodevelopmental sequelae in acute bacterial meningitis; Talukder MR, Ferdousy R, Parveen M, Khan NZ. *Bangladesh Journal of Child Health*. 2004; Vol. 28 (2): 51 – 54.

2006

17

Screening Methods for Childhood Hearing Impairment in Rural Bangladesh; Abbey L Berg, HemayetunnesaPapri, ShamimFerdous, Naila Z Khan, Maureen S Durkin. *Int J PedOtorhinolaryngol*. 2006; 70: 107 – 114.

18

Neurodevelopmental outcomes of preterm infants in Bangladesh; Khan NZ, Muslima H, Parveen M, Bhattacharya M, Begum N, Chowdhury S, Jahan M, Darmstadt GL. *Pediatrics*. 2006 Jul;118(1):280-9.

19

Side effects of phenobarbital and carbamazepine in childhood epilepsy: randomized controlled trial Selina H Banu, Moshrat Jahan, UmmeKulsumKoli, SaadiaFerdousi, Naila Z Khan, Brian Neville. Cite this article as: *BMJ*, doi:10.1136/bmj.39022.436389.BE

2007

20

Child with disabilities and their mothers; Begum Makuda ; *The International Journal of Narrative Therapy and Community Work* 2007 No. 3

2008

21

Stress in mothers of preterm infants in Bangladesh: associations with family, child and maternal factors and children's neuro-development. N. Z. Khan,* H. Muslima,* M. Bhattacharya,* R. Parvin,* N. Begum,* M. Jahan,* D. Begum,* S. Akhtar,* A. S. M. N. U. Ahmed† and G.L.Darmstadt‡ *Child: Care, Health and Development*, doi:10.1111/j. 1365 -2214 . 2008 . 00873.x

22

Retinopathy of Prematurity in Bangladeshi Neonates; Ahmed AS, Muslima H, Anwar KS, Khan NZ, Chowdhury MA, Saha SK, Darmstadt GL; *J of Trop Pediatrics*. 2008 Oct; 54 (5):333-9. Epub 2008 May 25.

23

Behaviour problems in young children in rural Bangladesh; Naila Z. Khan, ShamimFerdous, Robiul Islam, Afroza Sultana, Maureen Durkin, Helen McConachie. *J Trop Peds*. 2009 Jun; 55(3):177-82. Epub 2008 Dec 9

2009

24

Neurodevelopmental Sequelae in Pneumococcal Meningitis Cases in Bangladesh: a comprehensive follow up study; Samir K. Saha, Naila Z. Khan, A.S.M. Nawshad U Ahmed, M. Ruhul Amin, M. Hanif, Mustafa Mahbub, Kazi S Anwar, Shamim A. Qazi, Paul Kilgore, Abdullah H. Baqui. *Clin Infect Dis*. 2009 Mar 1; 48 Suppl 2: S90-6.

25

Child disability screening, nutrition, and early learning in 18 countries with low and middle incomes: data from the third round of UNICEF's Multiple Indicator Cluster Survey (2005–06) Carissa A Gottlieb, Matthew J Maenner, Claudia Cappa, Maureen S Durkin. *Lancet* 2009; 374: 1831–39

2010

26

Validation of Rapid Neurodevelopmental Assessment Instrument for Under-Two-Year-Old Children in Bangladesh. . Naila Zaman Khan, HumairaMuslima, Dilara Begum, Asma Begum Shilpi, Selina Akhter, KhaledaBilkis, Nasreen Begum, MonowaraParveen, ShamimFerdous, RomellaMorshed, ManeeshBatra and Gary L. Darmstadt , *Pediatrics* published online Mar 22, 2010; DOI: 10.1542/peds.2008-3471

2011

27

Child psychiatric disorders presenting to a tertiary multidisciplinary child development service in Bangladesh; Islam F, ParveenM, Parvin R, Khan NZ et al. *Bang J Ch Health*. 2011; 35 (3): 84-89.

28

The Impact of Maternal and Household Characteristics on Childhood Impairments and Disabilities in Bangladesh; Naila Z. Khan¹, Shamim Ferdous², Must Afamahbub¹, Reaz Mobarak¹, Monowara Parveen¹, Daniel Mont³, Maureen Durkin⁴. *Bang J Child Health* 2011; VOL 35 (2): 41-48

29 **Neurodevelopmental outcomes of treatment of symptomatic CMV infection with Ganciclovir;** Mustafa Mahbub, MosiulAzam, Naila Zaman Khan. *Bang J Child Health*. 2011; 35 (3): 97-101.

30 **Hyponatremia in children admitted with acute bacterial meningitis;** Mahbub M, Azam M, Khan NZ. *Dhaka Shishu Hospital Journal*. June 2011; 27 (1): 31-34.

31 **Feeding difficulties in children with cerebral palsy: low-cost caregiver training in Dhaka, Bangladesh;** M. S. Adams,* N. Z. Khan,‡ S. A. Begum,‡ S. L. Wirz,* T. Hesketh* and T. R. Pring†. *Child: Care, Health and Development* _1327 1..11

32 **Sub Acute Sclerosing Pan-Encephalitis (SSPE): A Ten-Year Experience; Azam AZMM,** Mahbub M, Majumdar SC, Banu SH, Khan NZ. *Dhaka Shishu (Children) Hospital*. Dec 2011; 27 (2): 79-82. 2012:

2012

33 **Autism and the Grand Challenges in Global Mental Health**

34 **Prediction of seizure outcome in childhood epilepsies in countries with limited resources: a prospective study.** Selina H Banu^{1,2}|Naila Z Khan³|Mahmuda Hossain³|Saadia Ferdousi³|Stewart Boyd², Rod C Scott^{2,4}|Brian Neville² . *Developmental Medicine & Child Neurology* ^a 2012, DOI: 10.1111/j.1469-8749.2012.04325.x

35 **Validation of a home-based neurodevelopmental screening tool for under 2-year-old children in Bangladesh;** N. Z. Khan,* H. Muslima,* A. B. Shilpi,* D. Begum,* S. Akhtar,* M. Parveen,* S. Ferdous,†H. McConachie‡ and G. L. Darmstadt . *Child: Care, Health and Development* doi:10.1111/j.1365-2214.2012.01393.x

36 **Comparison of scoring of the parent's interview for autism-clinical version (PIA-CV) among ASD children and those with speech delay without ASD at a child development centre in Bangladesh.** Farzana Islam¹, Humaira Muslima², Monowara Parveen³, Narsis Rahman⁴, Dilara Begum⁵, Selina Akhter⁶, Asma Begum Shilpi⁷, Mahmuda Khatoon⁸, Naila Zaman Khan⁹. *Dhaka Shishu (Children) Hospital Journal*, 2012; 28 (2) :67-72

2013

37 **Validation of Rapid Neurodevelopmental Assessment for 2-to 5-Year-Old Children in Bangladesh.** Khan NZ, Muslima H, Shilpi AB, Begum D, Parveen M, Akter N, Ferdous S, Nahar K, McConachie H, Darmstadt GL. *Pediatrics* 131.2 (2013): e486-e494.

38 **Child disability services in Bangladesh;** Helen McConachie1, Alison Salt2

39 **Behinderung und internationale Entwicklung Disability and International Development**

40

Follow-Up of Cases of Haemophilus influenzae Type b Meningitis to Determine Its Long-Term Sequelae; A. S. M. Nawshad Uddin Ahmed, FCPS1, Naila Z. Khan, FCPS, PhD2, Manzoor Hussain, FRCP, FRCPC1, M. Ruhul Amin, FCPS1, Mohammed Hanif, FCPS, FRCP1, Mustafa Mahbub, FCPS2, Shams El-Arifeen, MBBS, DrPH3, Abdullah H. Baqui, MBBS, DrPH4, Shamim A. Qazi, MD5, and Samir K. Saha, PhD6
The Journal Of Pediatrics, Vol. 163

41

Outcomes of An Early Intervention Programme on Children with ASD at a Child Development Clinic in Bangladesh. Dilara Begum¹, Farzana Islam², Selina Akhter³, Asma Begum Shilpi⁴, Humaira Muslima⁵, Mahmuda Khatun⁶ and Naila Zaman Khan⁷. *DS (Child) H J* 2013; 29 (1) : 43-47

42

Screening Method for Vision Disorders of Young Children in Rural Bangladesh. Md. Reaz Mobarak¹, Naila Zaman Khan², Maureen S Durkin³, Leslie L Davidson⁴, Shamim Ferdous⁵, KaziShabbir Anowar⁶, Sultana S Zaman⁷. *DS (Child) H J* 2013; 29 (2) : 118-125

2014

43

Validation of a Rapid Neurodevelopmental Assessment Tool for 5 to 9 Year-Old Children in Bangladesh. Naila Z. Khan, MBBS, FCPS, PhD1, HumairaMuslima, MBBS, DCM1, Shams El Arifeen, MBBS, PhD², Helen McConachie, PhD³, Asma Begum Shilpi, MSc¹, ShamimFerdous, MBBS, DCH⁴, and Gary L. Darmstadt, MD, MS⁵. *The Journal Of Pediatrics*,

44

EEG in ICU: A monitoring tool for critically ill patient ; Selina HusnaBanu. *Bangladesh Crit Care J* March 2014; 2 (1): 28-34

45

Adaptation of items of Bayley Scales of Infant Development-II (BSID-II) suitable for Bangladeshi infants; Parveen, M., Rahman, S. T., Islam, S., Zaman, S. S., Hamadani, J., & Khan, N. Z. *Dhaka University Journal of Biological Sciences*, 2014; 23(2): 187-195. 2014; 23(2): 187-195.

46

Cysticercal Encephalitis: A Rare Presentation of Neurocysticercosis: A Case Report; Debnath B, Mazumder SC, Mahbub M, Khan NZ. *Bang J Child Health*. Dec 2014. 38 (3): 169-172. <http://www.banglajol.info/index.php/BJCH/article/view/22830ticle/view/22830>

2015

47

Neurodevelopmental Evaluation in Full-term Newborns with Neonatal Hypoxic Ischemic Encephalopathy (HIE): A Case Control Study. SELINA H BANU¹, AFM SALIM², RAWNAK ARA², ROKSANA AKHTER², NAILA Z. KHAN⁴. *Bangladesh J Child Health* 2015; Vol 39 (1) : 6-13

48

Clinical Presentation and Laboratory Profile in Cases of Suspected Neurometabolic Disorders. Mahbub M, Azam AZMM, Mazumder SC, Debnath B, Khan NZ. Background History, *Bangladesh J Child Health*. April 2015. Vol. 39 (1):24-29. Vol. 39(1):24-29.

2016

49 **Cranial Ultrasound in Preterm Neonates: Screening of at Risk Infants for Long Term Neurodevelopmental Impairments;** Mirza Md. Ziaul Islam¹, Md. Atiqul Islam², M Monir Hossain³, Naila Zaman Khan⁴. *Journal of Enam Medical College* Vol 6 No 1 January 2016

50 **Validation of a rapid neurodevelopmental assessment tool for 10- to 16-year-old young adolescents in Bangladesh;** H. Muslima,* N. Z. Khan,* A. B. Shilpi,* D. Begum,* M. Parveen,†H. McConachie‡ and G. L. Darmstadt§. *Child: Care, Health and Development* doi:10.1111/cch.12362

51 **Can we measure cognitive constructs consistently within and across cultures? Evidence from a test battery in Bangladesh, Ghana and Tanzania.** Holding, Penny, Adote Anum, Fons JR van de Vijver, Maclean Vokhiwa, Nancy Bugase, Toffajjal Hossen, Khan N, Charles Makasi et al. *Applied Neuropsychology: Child*. 2016: 1-13.

52 **Neurodevelopmental Outcomes in Children Born to Climate Refugee Mothers in Bangladesh: Experiences from Cyclone Aila;** Khan NZ, Muslima H, Shilpi AB, Majumder SK, Khan AE. *Mymensingh Medical Journal: MMJ*. 2016 Oct; 25(4):746

53 **Neurodevelopmental Assessment in Preterm Neonates at Early Ages: Screening of at-risk Infants for Long Term Sequelae.** Islam MMZ, Hossain MM, Haque SA, Khan NZ. *Bangladesh Journal of Child Health*. 2016; 40 (1):

2018

54 **Scaling up child development centres in Bangladesh.** Khan, N. Z., Sultana, R., Ahmed, F., Shilpi, A. B., Sultana, N., Darmstadt, G. L. *Child: Care, Health and Development*. 2018, 44: 19–30. doi: 10.1111/cch.12530

2019

55 **Screening for disability and mental health problems in recently displaced Rohingya children.** Khan NZ, Shilpi AB, Sultana R, Sarker S, Razia S, Roy B, Arif A, Ahmed MU, Saha SC, McConachie H. Submitted to *Child: Care, Health and Development*. 2019;45:28–35

56 **Detecting Developmental Delay and Autism Through Machine Learning Models Using Home Videos Bangladeshi Children: Development and Validation Study;** Qandeel Tariq^{1,2*} MA; Scott Lanyon Fleming^{2*}, BS; Jessey Nicole Schwartz^{1,2}, BA; Kaitlyn Dunlap^{1,2}, BSc, MRES; Conor Corbin², BS; Peter Washington², MS; Haik Kalantarian^{1,2}, PhD; Naila Z Khan³, PhD, MBBS, FCPS; Gary L Darmstadt^{1,4}, PhD; Dennis Paul Wall^{1,2}, PhD. *J Med Internet Res* 2019 | vol. 21 | iss. 4 | e13822 | p.1

57 **Historical Vignette Epilepsy Pioneers and Current Educational Programs in Bangladesh;** Selina H. Banu¹, Mahmood A. Chowdhury², Muhammad M. Rahman³, Narayan C. Saha⁴, Naila Z. Khan⁵. *Journal of Pediatric Epilepsy*

58 **Gaps in current autism research: The thoughts of the Autism Research; Editorial Board and Associate.** Editors: David G. Amaral, George M. Anderson, Anthony Bailey, Raphe Bernier, Somer Bishop, Gene Blatt, Ricardo Canal-Bedia, Tony Charman, Geraldine Dawson, Petrus J. de Vries, Emanuel Dicicco-Bloom, Cheryl Dissanayake, Yoko Kamio, Rajesh Kana, Naila Z. Khan, Allison Knoll, Frank Kooy, Janet Lainhart, Pat Levitt, Katherine Loveland, Nancy Minshew, Ralph-Axel Mueller, Declan Murphy, Peter Mundy, Sara Palencia, Jennifer Pinto-Martin, Alexia Rattazzi, Sally Rogers, Wendy L. Stone, Sara Jane Webb, and Andrew Whitehouse